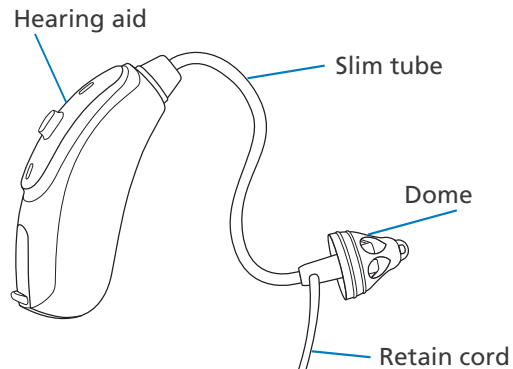
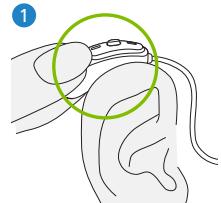


## Inserting your hearing aid

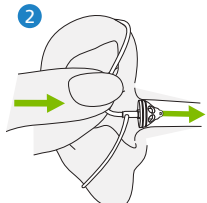
Insertion of a hearing aid can take some time to get used to. It might help to practice at home in front of a mirror.



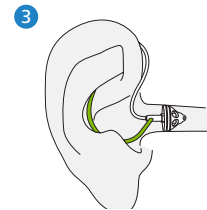
### Inserting the hearing aid



1. Position the hearing aid behind the ear.

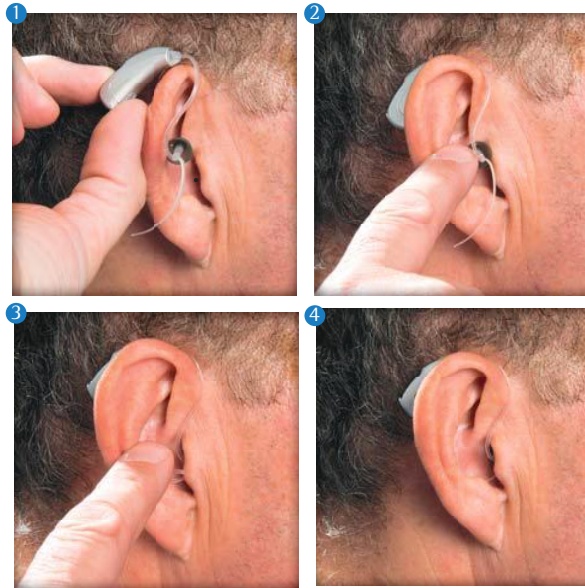


2. Insert dome into ear canal (it might help to pull the ear back when you do this with the other hand as it opens up the canal). A light press on the tube, once the dome is positioned in the canal, can help with correct dome placement



3. Curl the "tail" around bowl of the ear.

4. Hearing aid should now be fitted comfortably.



### Audiology Departments:

Furness General Hospital  
Tel: 01229870870  
Email: fgh.audiology@mbht.nhs.uk

Westmorland General Hospital  
Tel: 01539 795369  
Email: wgh.audiology@mbht.nhs.uk

Royal Lancaster Infirmary  
Tel: 01524 583716  
Email: rli.audiology@mbht.nhs.uk

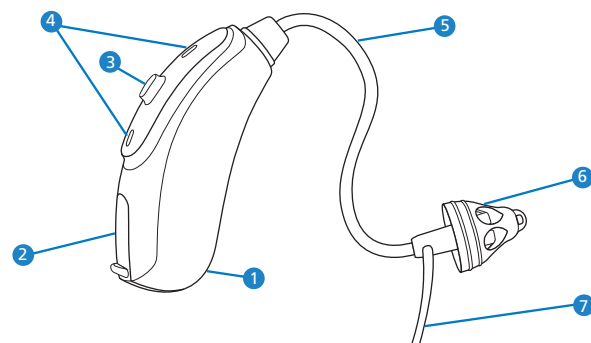
University Hospitals **NHS**  
of Morecambe Bay  
NHS Foundation Trust

## NHS Audiology

Looking after your hearing aid  
**Nathos Auto™ Micro Slim Tube**



A great place to be cared for; a great place to work



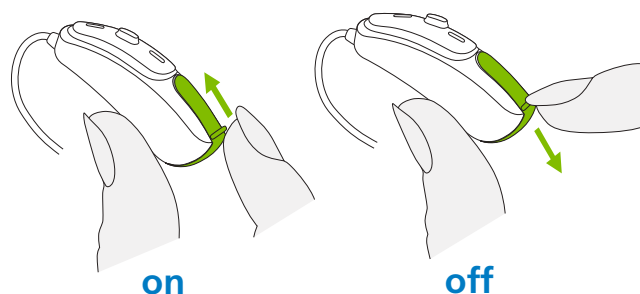
## Nathos™ Auto Micro Slim Tube

- 1 Right or left indicator\*, placed in the battery compartment
- 2 Battery compartment
- 3 Program switch
- 4 Microphone input
- 5 Slim tube
- 6 Dome
- 7 Retain cord

\*Right = red | Left = blue

## Turning your hearing aid on/off

Switch on/off the hearing system by opening/closing the battery compartment (below).

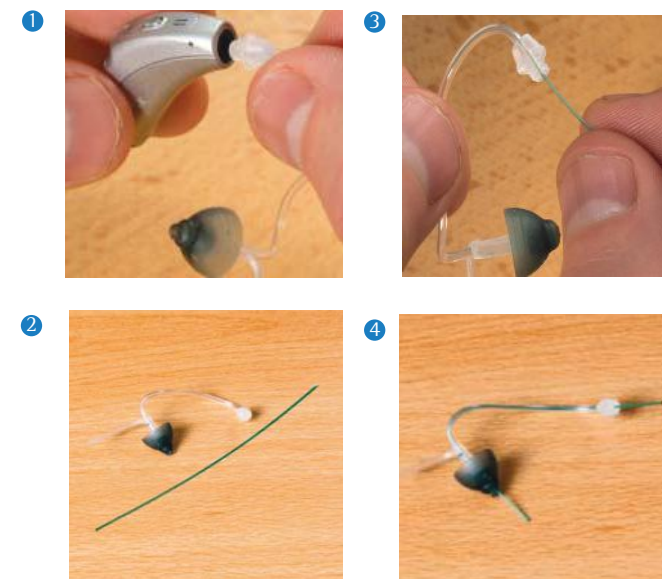


## Cleaning your slim tube

Your hearing aid will need cleaning from time to time. It can be cleaned on a regular basis or just when you feel it is needed. Clean the hearing aid by wiping it carefully with a soft, dry cloth or tissue. Take care not to get it wet.

The open fit ear piece should be cleaned every morning and night with a dry tissue or cloth to remove any wax. It is important that you do not remove the dome as it can become loose. It should be cleaned on a regular basis with the cleaning tool, as shown right.

- 1 Unscrew the tubing from the hearing aid. The way in which the tube separates from the aid will depend on the model. Please see manufacturer's instructions (given at the fitting appointment) for further detail.
- 2 You will need a tool that looks like this.
- 3 Insert the cleaning tool into the tubing.
- 4 The tool needs to go all the way through the tubing and out the other side. Reconnect the tube to the hearing aid.



\*Slim Tubes should be replaced every 6 months'